

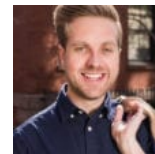


The Bond 2BD/2BA Unit 4A

11th Street 4A Long Island City NY 11101

This stylish collection of residences at 46-20 11th Street reconceptualizes the neighborhood's industrial legacy. Where paper factories once stood, The Bond stands out, exuding LIC's brash bold spirit of innovation. The result is delightfully chic residences that enliven the neighborhood — a rare combination of design and distinguished functionality. Infused with carefully considered elements that enhance the living experience, the 42-unit building is reflective of its commitment to the neighborhood aesthetic. Located close to the water and Gantry State Park, residents are within reach of all that LIC has to offer. The striking brick and glass exterior sets the tone for the residences inside. Clean, modern lines blend with premium finishes and exclusive details in harmonious balance. Apartments are imbued with premium finishes, including 5" wide plank oak flooring and generous ceiling heights. Oversized windows bring the outside in with an abundance of natural light, showcasing views of the neighborhood. These residences are enhanc...

Square Feet: 1025	Bedrooms: 2	Bathrooms: 2
Price: \$1,260,000	Common Charges: \$769	Taxes: \$968



Heath Tucker
646-961-4800
heath@modernspacesnyc.com

Balcony	Bike room	Central A/C
Central air	Central HVAC	City Views
Dishwasher	Doorman	Elevator

