



## 5 -33 48th Ave

4C Long Island City NY 11101

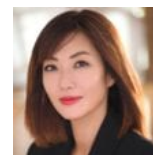
The Zipper reflects your bold style. This premium 41-unit condominium residence resonates to the unmistakable rhythm of Long Island City. The neighborhood's historic past comes into focus here in the building's thoughtful conversion from its life as a former zipper factory. The converted building preserves the character of its original early 20th-century structure, fitted with luxurious finishes and amenities that represent modern craftsmanship at its best. Retaining the authentic brick exterior (with a sleek addition of glass embellishment at the top), its construction harkens back to New York City at the end of the Jazz Age. The Zipper's conversion is a singular blend of historic and contemporary design, maintaining the original brick walls and wooden beams within the context of a striking present-day aesthetic. The well-proportioned residences are available in studio to four-bedroom layouts. All feature open floor plan living, highlighted by engineered wood flooring, ample ceiling heights, and casement windows. Each intimate haven provides a respite from the bustling pace of urban life, elevated by an industrial color palette that ideally accommodates your individual taste level. Stylish kitchens combine the clean lines of contemporary design with elegant functionality and classic de...

Square Feet: 647	Bedrooms: 1	Bathrooms: 1.0
Price: \$870,000	Common Charges: \$646	Taxes: \$595



Kenneth Lee  
917-882-2279  
[kenneth@modernspacesnyc.com](mailto:kenneth@modernspacesnyc.com)

Garage	Pre-War	Storage
Washer/Dryer		



Sophia Park  
917-560-5985  
[sophia@modernspacesnyc.com](mailto:sophia@modernspacesnyc.com)

