



5 -33 48th Ave

4H Long Island City NY 11101

The Zipper reflects your bold style. This premium 41-unit condominium residence resonates to the unmistakable rhythm of Long Island City. The neighborhoods historic past comes into focus here in the buildings thoughtful conversion from its life as former zipper factory. The converted building preserves the character of its original early 20th century structure, fitted with luxurious finishes and amenities that represent modern craftsmanship at its best. Retaining the authentic brick exterior (with a sleek addition of glass embellishment at the top), its construction harkens back to New York City at the end of the Jazz Age. The Zippers conversion is a singular blend of historic and contemporary design, maintaining the original brick walls, wooden beams and wooden slat ceilings in many residences within the context of a striking present-day aesthetic. The well-proportioned residences are available in studio to four bedroom layouts. All feature open floor plan living, highlighted by engineered wood flooring, ample ceiling heights and casement windows. Each intimate haven provides a respite from the bustling pace of urban life, elevated by an industrial color palette that ideally accommodates your individual taste level. Stylish kitchens combine the clean lines of contemporary design with elegant fu...

Square Feet: 504

Bathrooms: 1.0

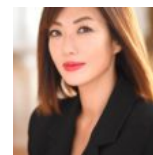
Price: \$638,000

Common Charges: \$500 Taxes: \$364



Kenneth Lee
917-882-2279

kenneth@modernspacesnyc.com



Sophia Park
917-560-5985

sophia@modernspacesnyc.com

Doorman
Washer/Dryer

Fitness Center

Garage

