



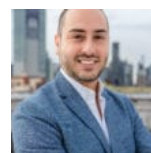
## Townhouse on the Park - Penthouse

### PENTHOUSE Long Island City NY 11101

Townhouse on the Park redefines apartment living. This appealing collection of townhomes is a personal oasis that combines outstanding home design with the allure of urban living. Designed with modern New Yorkers in mind, these impeccable multi-level residences - with only two units per townhouse, roomy interiors, and private outdoor spaces - will challenge your expectations of city living. This is sure to be the most coveted new address at the heart of Long Island City. The handsome exterior facade - a fresh interpretation of a traditional townhouse - sets the tone for the contemporary design inside. These airy flex three- and three plus-bedroom homes each span three levels, with 9-foot plus ceilings and wood plank flooring throughout. Wall-to-wall windows bathe each home in an abundance of natural light. Enjoy plenty of space, including bonus rooms, designed to accommodate today's every need, with the flexibility to adapt to tomorrow's changing demands and desires. Embrace the outdoors with abundant private outdoor space - a personal haven within the city. Garden level living rooms connect through full-width glass walls to spacious backyard patios. Penthouse residences feature brilliant rooftop entertaining rooms with wet bars and mini-refrigerators that open onto expansive rooftop gardens, providing the per...

Square Feet: 1737      Bedrooms: 3      Bathrooms: 3.0  
Price: \$7,500

Multi Level      No Fee      Terrace  
Washer/Dryer



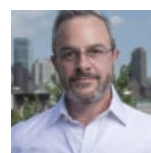
Andres Emilio Soto  
718-685-9617

[asoto@modernspacesnyc.com](mailto:asoto@modernspacesnyc.com)



Mary Torres  
347-302-2100

[maryt@modernspacesnyc.com](mailto:maryt@modernspacesnyc.com)



Chris Winslow  
646-284-3862

[chris@modernspacesnyc.com](mailto:chris@modernspacesnyc.com)

