



11 -11 46th Avenue, GDN

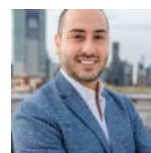
GDN Lo NY 11101

Rental prices are based on promotion pricing and are subject to change. Townhouse on the Park redefines apartment living. This appealing collection of 75 townhomes - situated between 45th Road and 46th Avenue in Long Island City - is a personal oasis that combines outstanding home design with the allure of urban living. Designed with modern New Yorkers in mind, these impeccable multi-level residences - with only two units per townhouse, roomy interiors, and private outdoor spaces - will challenge your expectations of city living. Each spacious residence reflects the pulse of the city that surrounds it, yet functions as a stylish private home unto itself. This is sure to be the most coveted new address at the heart of Long Island City. Renters drawn to the uniqueness of Townhouse on the Park will fall in love with and enhance what is already one of Queens' most appealing and dynamic neighborhoods. The handsome exterior facade -a fresh interpretation of a traditional townhouse -sets the tone for the contemporary design inside. These airy flex three- and three plus-bedroom homes each span three levels, with 9-foot plus ceilings and wood plank flooring throughout. Wall-to-wall windows bathe each home in an abundance of natural light. Make the most of life on a grand scale in these ...

Square Feet: 2199
Price: \$7,500

Bedrooms: 3

Bathrooms: 3.5



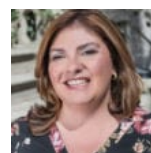
Andres Emilio Soto
718-685-9617

asoto@modernspacesnyc.com

Multi Level
Washer/Dryer

No Fee

Outdoor Space



Mary Torres
347-302-2100

maryt@modernspacesnyc.com

